



Infoaxis, Inc.

# InfoaxisConnect

Hosted Remote Access

## InfoaxisConnect Overview

---

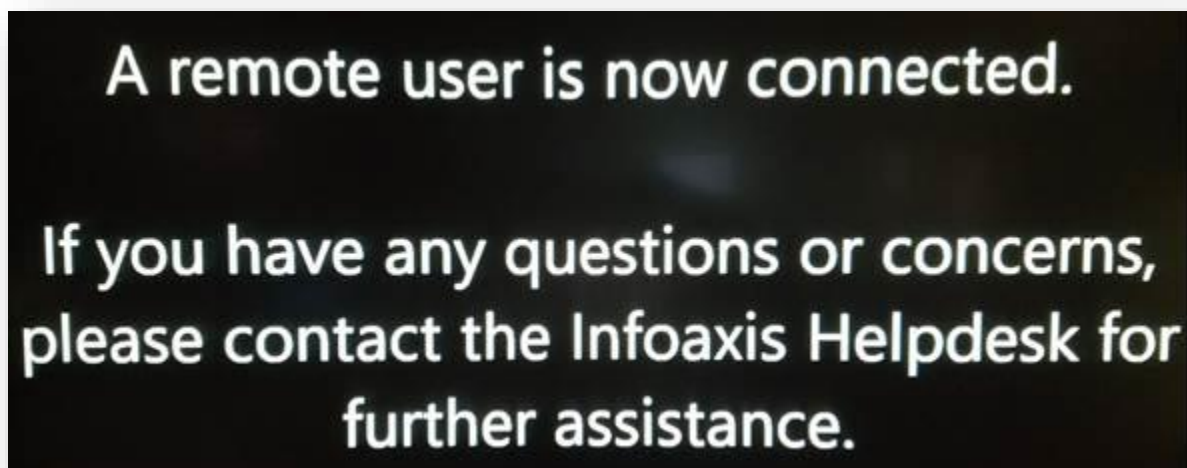
URL: <https://connect.infoaxis.com>


---

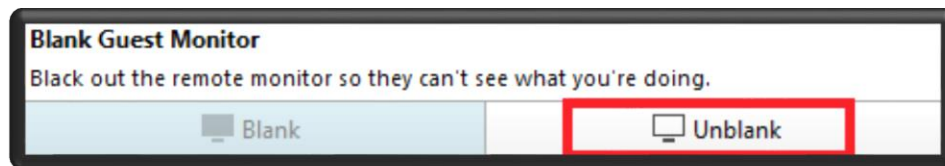
Upon connecting to an asset, you will see the below toolbar at the top of your remote session

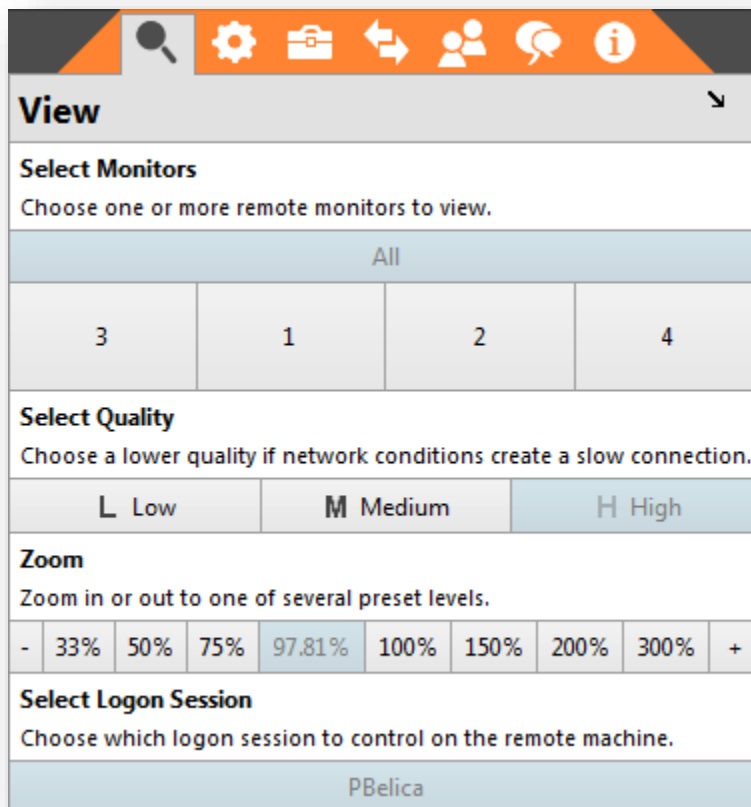


*\*\*\*By default, the end user's PC will be blanked out with the following message\*\**



In order to remove this message, hover over the cog  and select Unblank Monitor





### Select Monitors

- If the PC you are connecting to has multiple monitors, you can either view all monitors at once, or select the specific monitor you would like to view.

### Select Quality

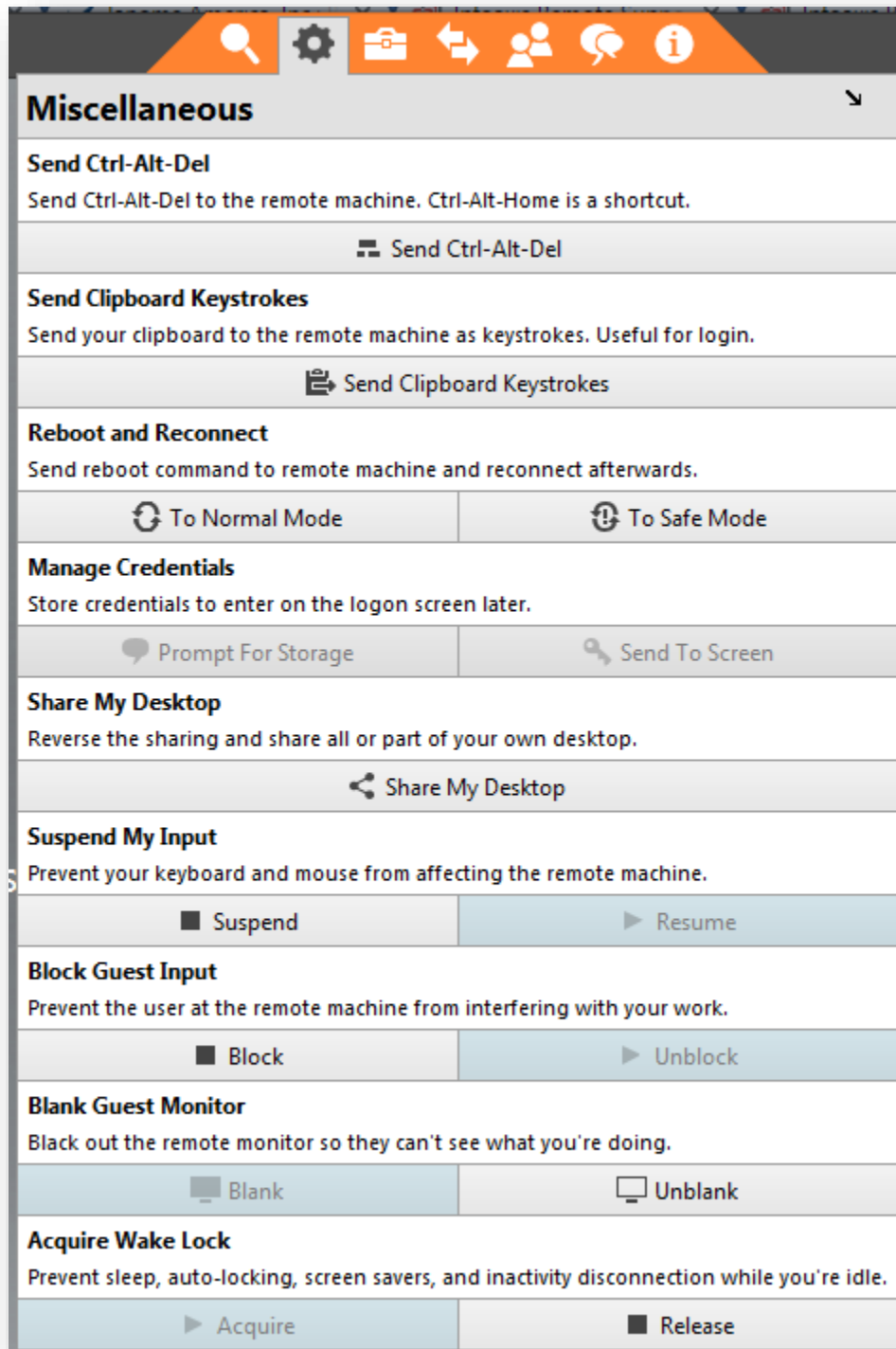
- This option is mainly used if your circuit is slow. By lowering the quality, the color range will be reduced which lessens the amount of traffic that needs to be transferred effectively making your remote session more responsive (not waiting for rewrites).

### Zoom

- Can't see that small writing? Zoom in, or out, of your remote session to affect your view. This does not affect the end user machine's resolution.

### Select Logon Session

- This option is used more for terminal servers to join another user's session. By default, you are connected to the console.



## Send Ctrl-Alt-Del

- Sends the keystrokes Ctrl-Alt-Del to the connected asset

### **Send Keyboard Keystrokes**

- This is useful if you have a complex password that is easier to copy/paste than type.

### **Reboot and Reconnect**

- Option to reboot your PC without logging in to both a normal reboot or safe mode with networking.

### **Manage Credentials**

- *Deprecated function*

### **Share My Desktop**

- This allows for the InfoaxisConnect session to be switched so the viewer can become the presenter and vice-versa.

### **Suspend My Input**

- If you would like to just view/monitor a session, you can enable (Suspend) this option to prevent any of your keyboard or mouse inputs to affect the end user.

### **Block Guest Input**

- This is the opposite of the above option as, when enabled (Block), the end user's keyboard and mouse inputs will not be recognized.

### **Blank Guest Monitor**

- As stated at the beginning of this user guide, this option is enabled by default to prevent unauthorized users from viewing the remote screen.

### **Acquire Wake Lock**

- This is another option that is enabled by default to prevent the end user's PC from going to sleep or activate the screensaver.

The other options are not covered in this User Guide as they are not applicable to InfoaxisConnect. If there are any questions, please don't hesitate to contact the Infoaxis Help Desk.