

Only for use with module W3016-16-RGB

*Instructions for PC Only, currently there is no MAC version of the Upgrader available.*

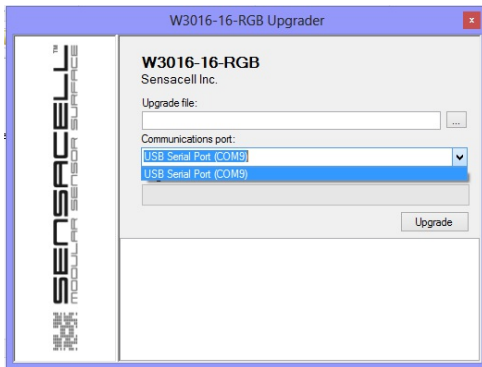
Assumes Sensynth2 and USB drivers have already been installed in host computer.

All modules can be gang-upgraded simultaneously.

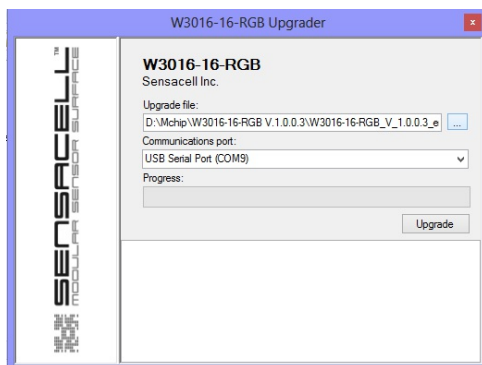
The bootloader in the Sensacell module is active only in the first 2 seconds after POWER ON, the upgrade process must be initiated within this time window.

To facilitate the upgrade, make sure that the power to the module array can be switched on and off with ease from the location of the upgrade computer.

- 1) Assemble Sensacell array with master module, all jumpers and power supply.
- 2) Test that the array is 100% functional.  
(Completes start-up normally, displays default or other programmed preset correctly.)
- 3) Connect USB to RS-485 adapter to array and PC USB port.
- 4) Launch Upgrader.exe program.
- 5) Point to correct COM port- same port used by SensaSynth2 program for communication.



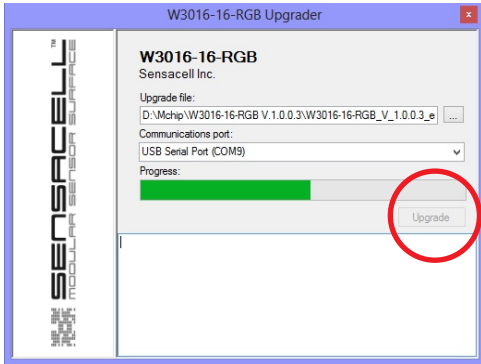
- 6) Point to Upgrade firmware file - example: W3016-16-RGB V1.0.0.0\_encrypted.hex



7. Turn off power to the Sensacell array
8. Restore the power to the Sensacell array.

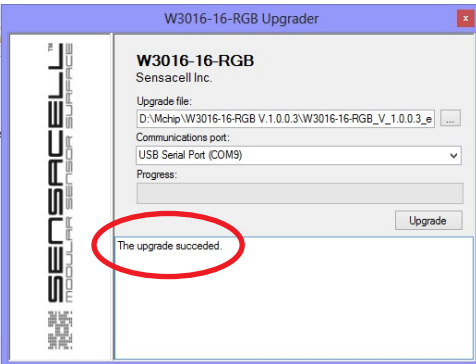
Only for use with module W3016-16-RGB

9. Within 1 second of power on, click the UPGRADE button on the Upgrader console.

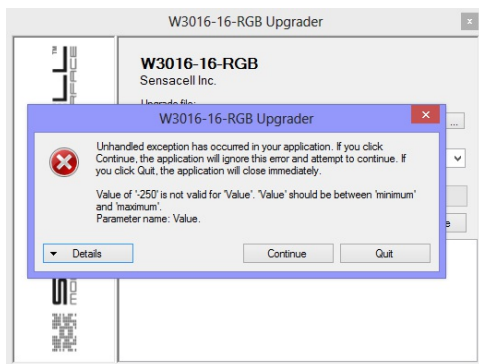


When the startup sequence is successful, the RED and GREEN lights on the USB interface will blink rapidly while the progress bar indicates the upload progress. The upgrade will take approximately 30 seconds- DO NOT interrupt the upgrade process.

Successful upgrade.



If the upgrade fails:



Check that the RED transmit LED flashes when you click UPGRADE  
If it does:

- 1) Try again, the timing between power on and start of upgrade is critical. There is a two second window of time after power on where the upgrade can be performed.
- 2) Check the connection between the USB interface and the array

If it does NOT flash:

- 1) Check the serial port selected- try another available port.
- 2) Check that the USB drivers are installed and the USB dongle is working by running the SensaSynth2 program.