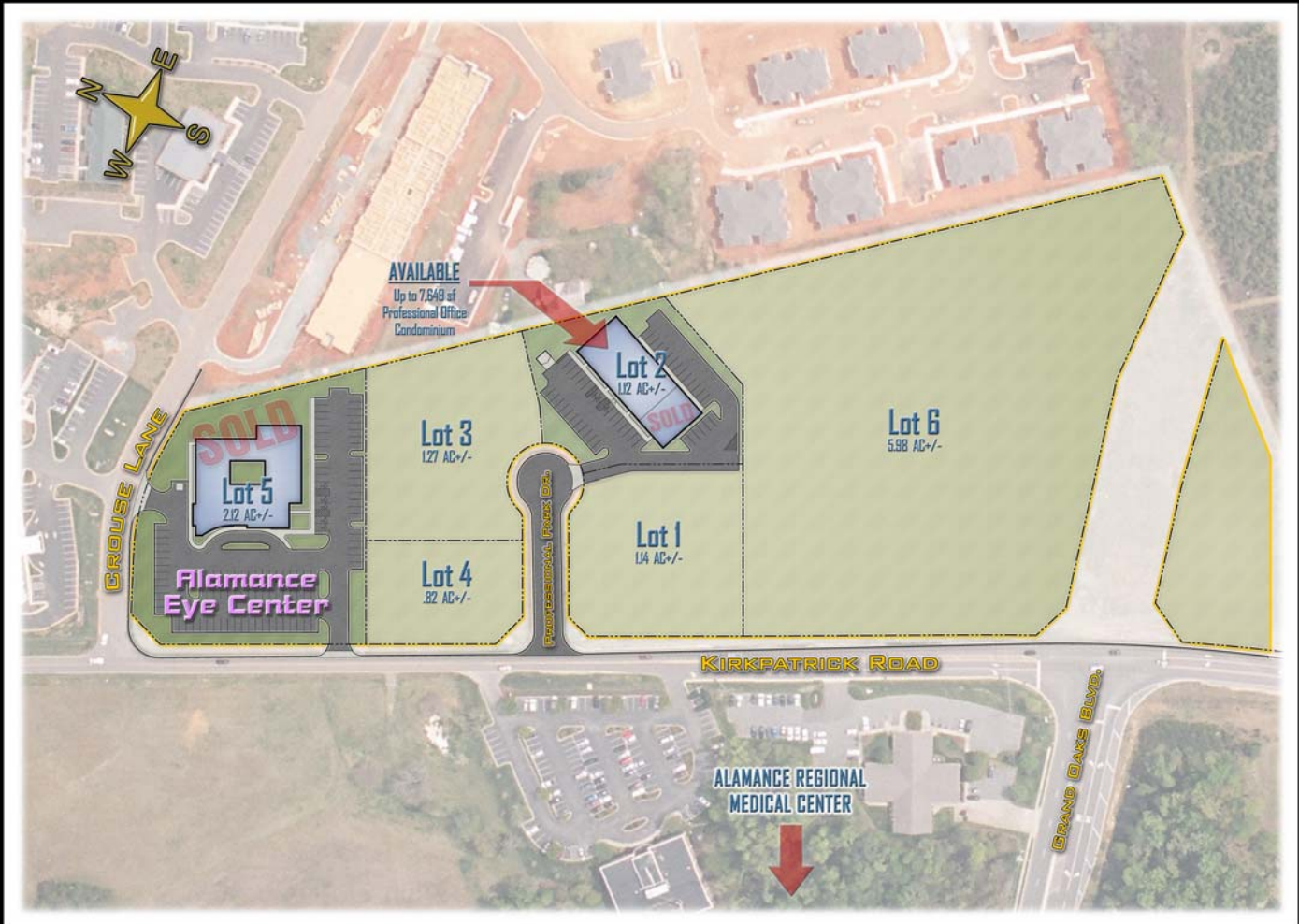


# KIRKPATRICK PROFESSIONAL CENTER

## BURLINGTON, NC



### USES

B2 GENERAL BUSINESS

### TOTAL AGERAGE AVAILABLE

12.554 AC

### POWER

DUKE ENERGY

### WATER (CITY OF BURLINGTON)

24" WATER MAIN

STATIC PRESSURE 64

RESIDUAL PRESSURE 62

4880 GPM

### SEWER (CITY OF BURLINGTON)

8" GRAVITY OUTALL FOR ALL LOTS

430K GPD

### DATA/TELEPHONE

CABLE (BROADBAND AVAILABLE)

### NATURAL GAS

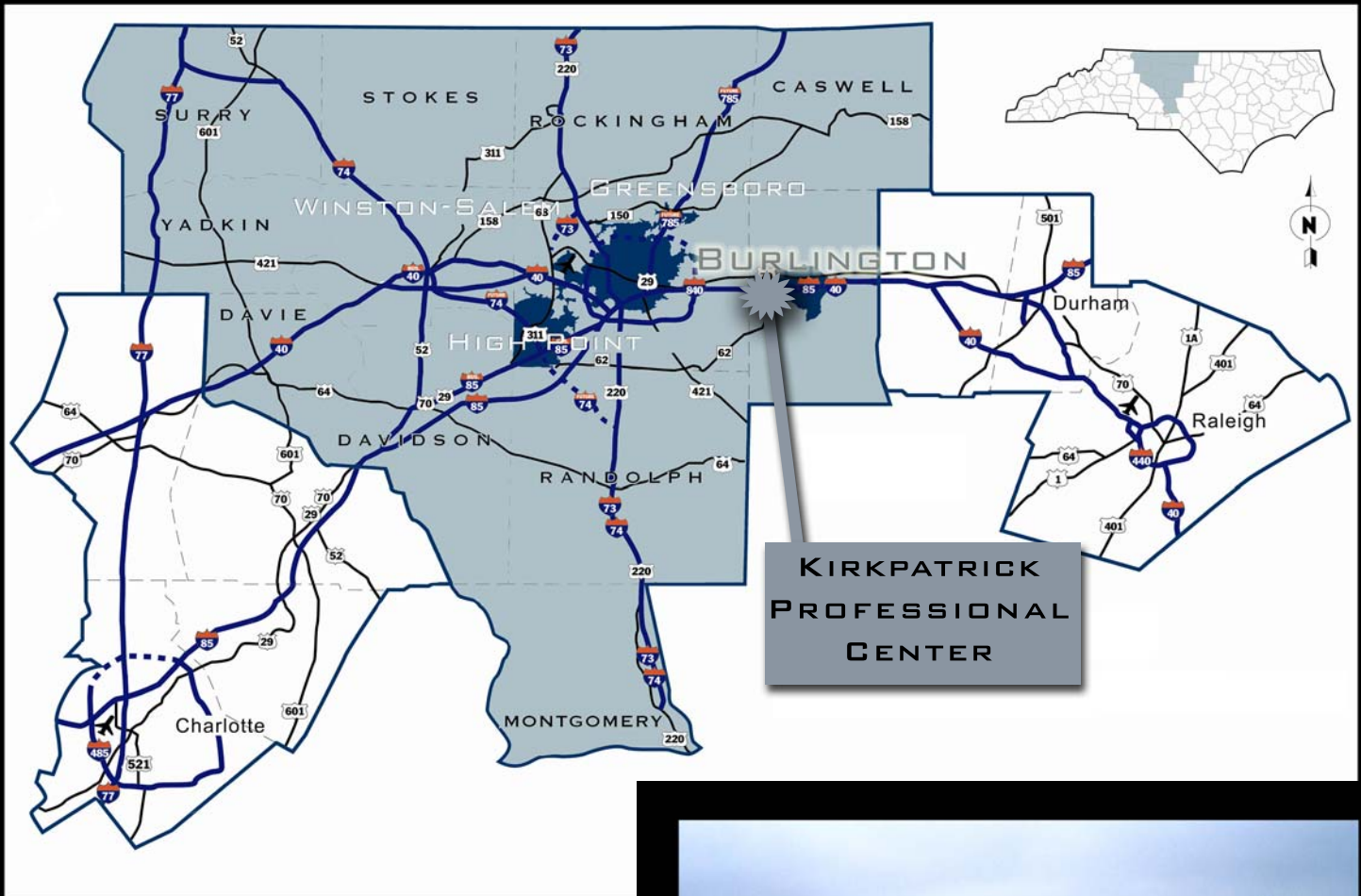
PIEDMONT NATURAL GAS CO.

## Convenient to Alamance Regional Medical Center

- Ideal for Medical or Professional Offices
- New Office Condominiums for Sale or Lease
- 2,500 SF to 7,650 SF available
- Protective Covenants including (but not limited to):
  - Uniform Landscaping Throughout the Center
  - Professional Building Appearances
  - Curb and Gutter on All Roads

# KIRKPATRICK PROFESSIONAL CENTER

## BURLINGTON, NC



Located in Burlington, Kirkpatrick Professional Center is convenient to the Triad and Triangle areas.

### PERMITTED USES

- MEDICAL OFFICES
- HEALTH OFFICES
- TREATMENT OFFICES
- GENERAL OFFICES
- MEDICAL & RESEARCH LABORATORIES
- BANKS/FINANCIAL INSTITUTIONS
- COMMUNITY BUILDINGS
- RETAIL
- PROFESSIONAL SERVICES

For more information on Kirkpatrick Professional Center or any of Samet's five other business parks, contact:

**Brian Hall**  
Real Estate Preconstruction Manager

Main 336.544.2600  
Direct 336.544.2643  
E-mail [bhall@sametcorp.com](mailto:bhall@sametcorp.com)



309 Gallimore Dairy Road, Suite 102,  
Greensboro, NC 27409  
336.544.2600  
[www.sametcorp.com](http://www.sametcorp.com)

