

# SAMET PROPERTIES



Development • Leasing & Brokerage • Property Management

**For Lease**  
Gallimore Dairy Business Park | 6900-D International Dr.  
Greensboro, NC, 27409



## Multi-Tenant Office/Flex Space

- ± 10,004 sf Building
  - ± 900 sf Office Space
- 19' Clear Ceiling Height
- (3) Dock High Doors
- Ordinary Hazard Sprinkler System

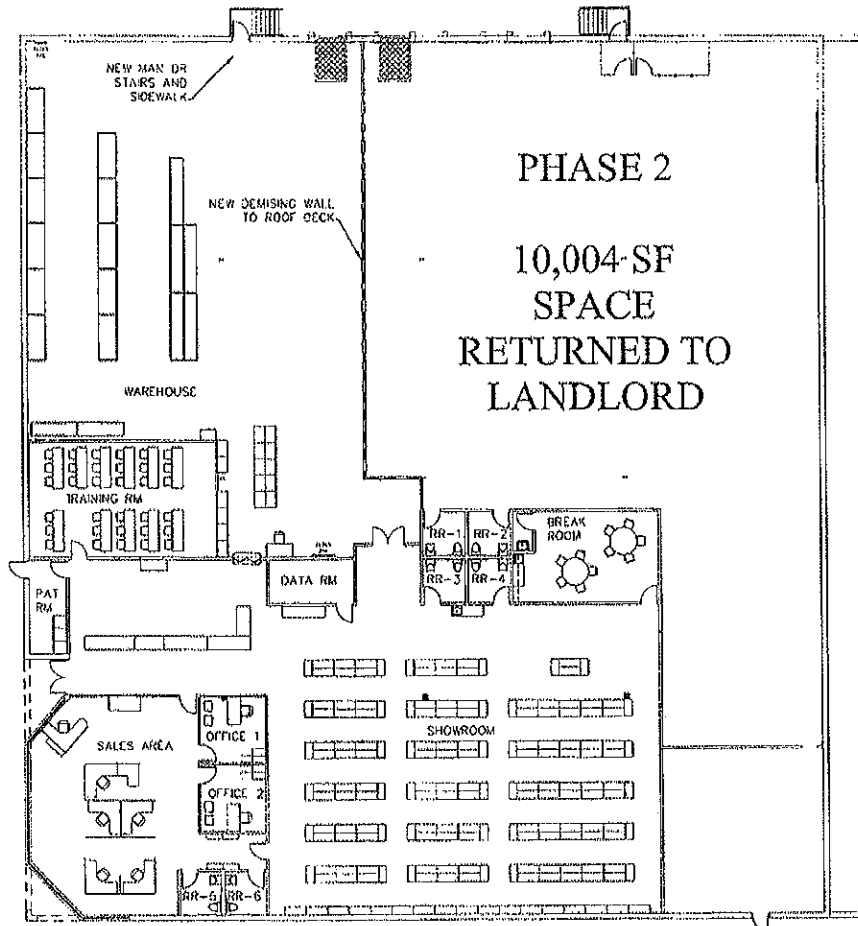
### Contact:

**Chris Lowe, CCIM**  
Samet Properties, LLC

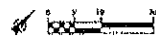
309 Gallimore Dairy Road,  
Suite 102  
Greensboro, NC 27409

Direct : 336.544.2620  
Fax: 336.544.2588  
Cell: 336.207.3245  
clowe@sametcorp.com

All information is deemed accurate and reliable. However, all information is subject to verification and change.



PHASE 2



ADI SPACE

14,196 SF